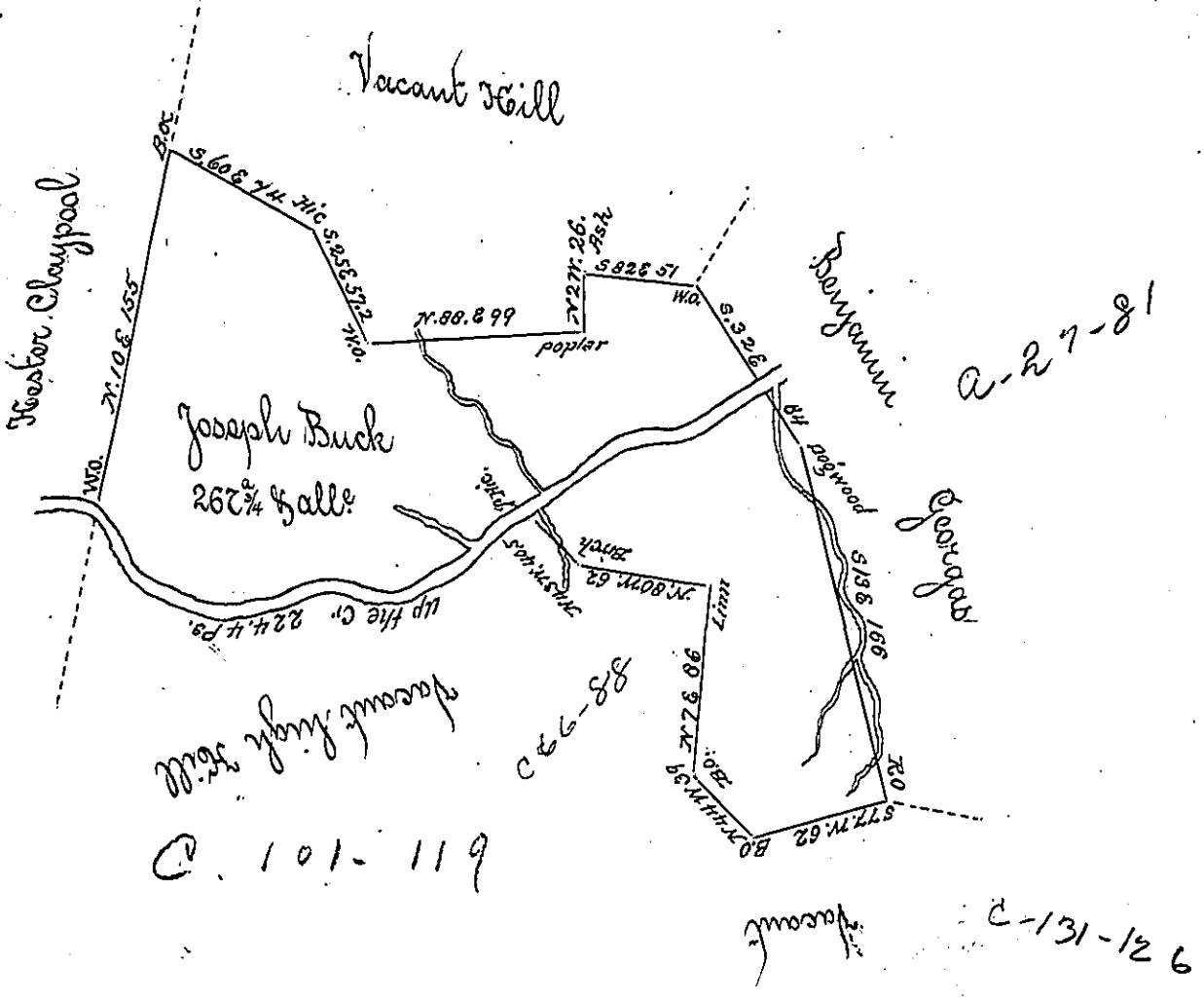


Courses and Distances -
up Berris Creek from -
the Hickory to White Oak

S. 42 W	20 Perches
S. 60 W	48.. do.
N. 80 W	37.. do.
S. 70 W	37.. do.
N 75 W	16.. do.
N 58 W	34.. do.
N 13 W	20.. do
N 48 W	12.4. do
		Total 224.4
		to W.O. on the Bank



Situated on Berris Creek about a Mile from the Mouth thereof including his Inpt in Quema-
 ming Township Bedford County and surveyed the 12th day of May 1787. In pursuance of a Warrant dated
 the 29th day of June 1786.

John Loukens Esq. }
 Surveyor General }

For George Woods Esq. D. D.
 Thomas Vickroy

IN TESTIMONY that the above is a copy of the original remaining on file in
 the Department of Internal Affairs of Pennsylvania, made
 conformably to an Act of Assembly approved the 16th day of
 February, 1833, I have hereunto set my Hand and caused
 the Seal of said Department to be affixed at Harrisburg,
 this second day of November 1903.

James B. Pison
 Secretary of Internal Affairs.